

Organization Charts

College of Engineering Organizational Charts

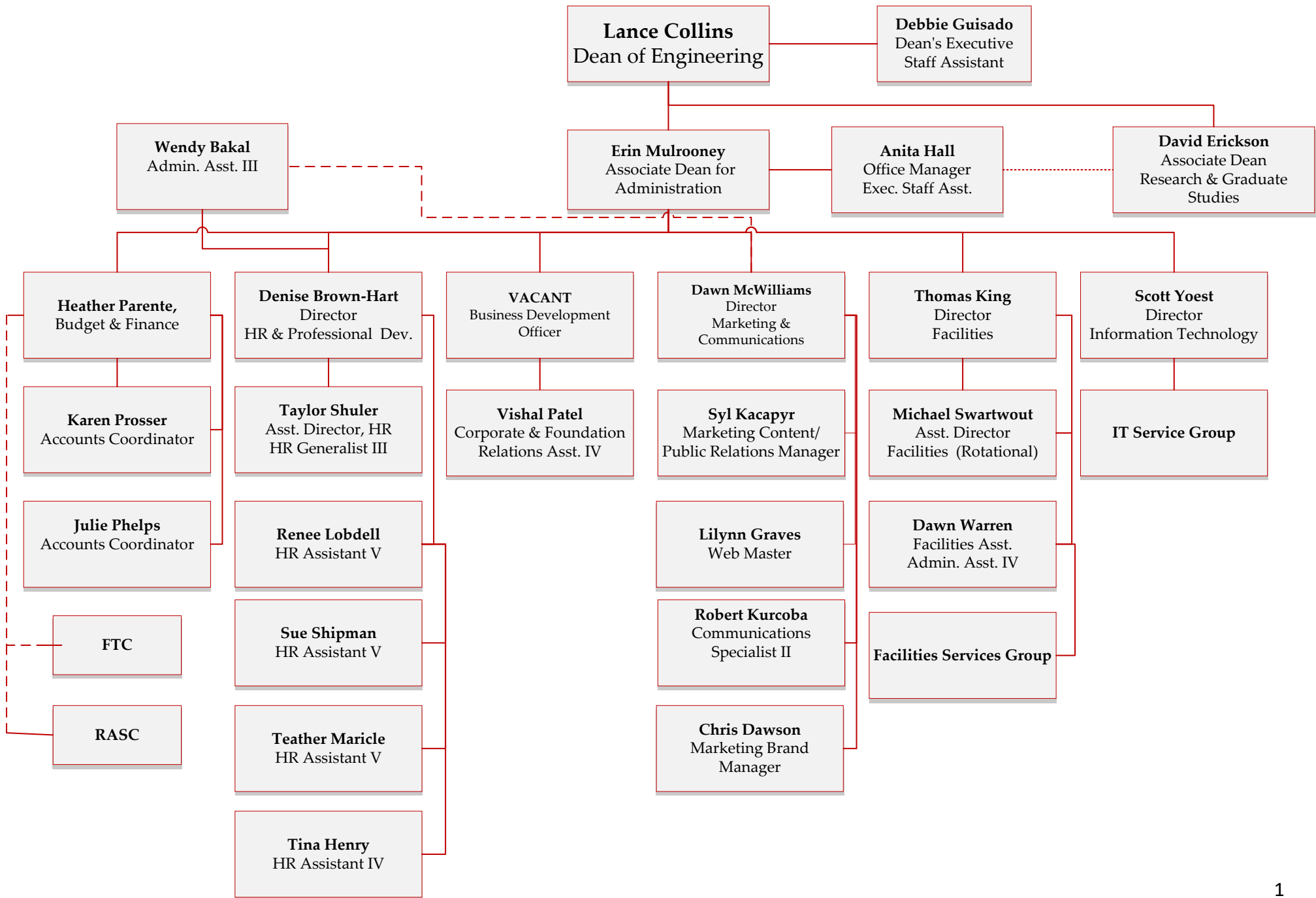
Administrative

Administration	1
Engineering Deans	2
Administrative Directors	3
Department & School Directors and Chairs	4
Department Directors of Administration	5
Student Services	6
Undergraduate Programs	7
Diversity Programs	8
Research Administration Svcs. Center	9
Alumni Affairs & Development	10
Financial Transaction Center	11
Information Technology Service Center	12

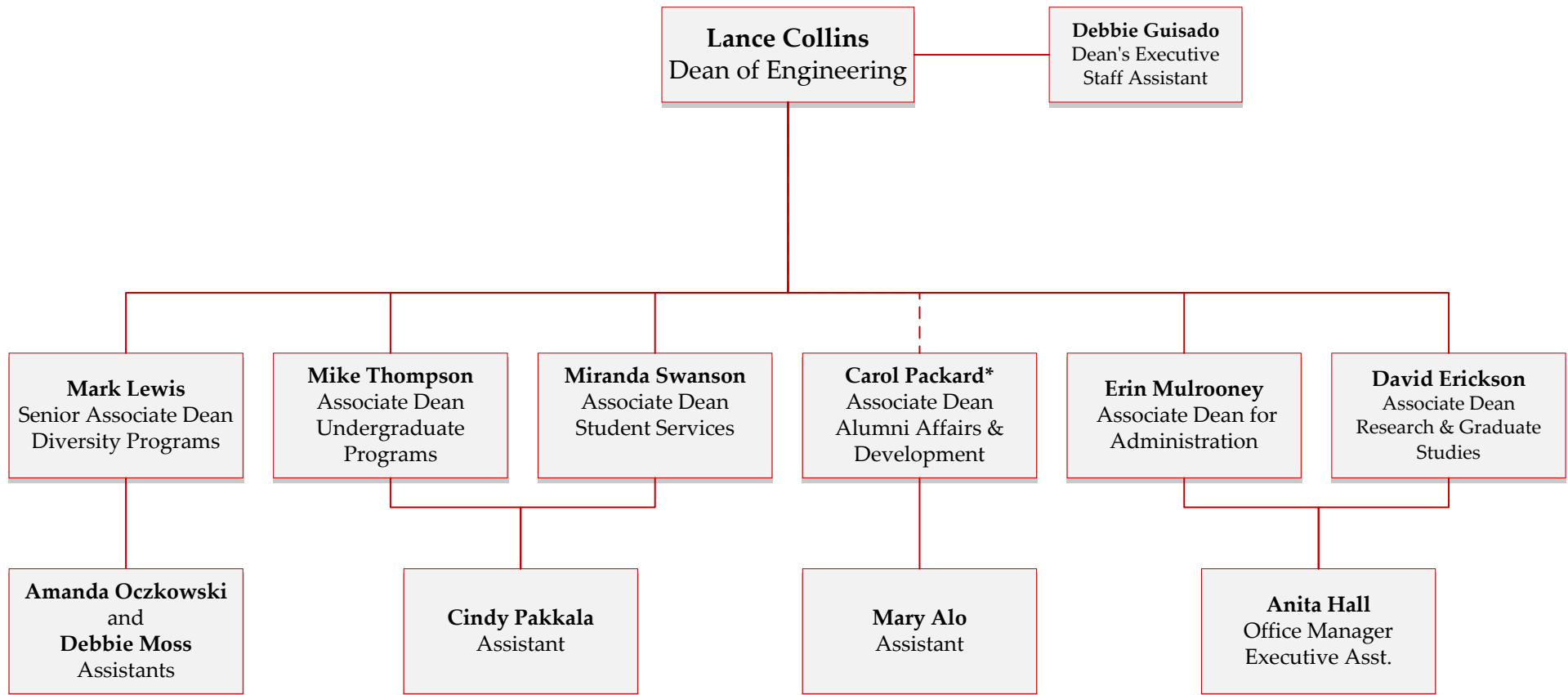
Schools and Departments

Facilities Service Center	13
Applied Engineering and Physics	14
Biomedical Engineering	15
Chemical & Biomolecular Engineering	16
Civil & Environmental Engineering	17
Earth & Atmospheric Sciences	18
Electrical & Computer Engineering	19
Mechanical & Aerospace Engineering	20
Materials Sciences & Engineering	21
Operations Research & Information Engineering	22
Systems Engineering	23

Administration



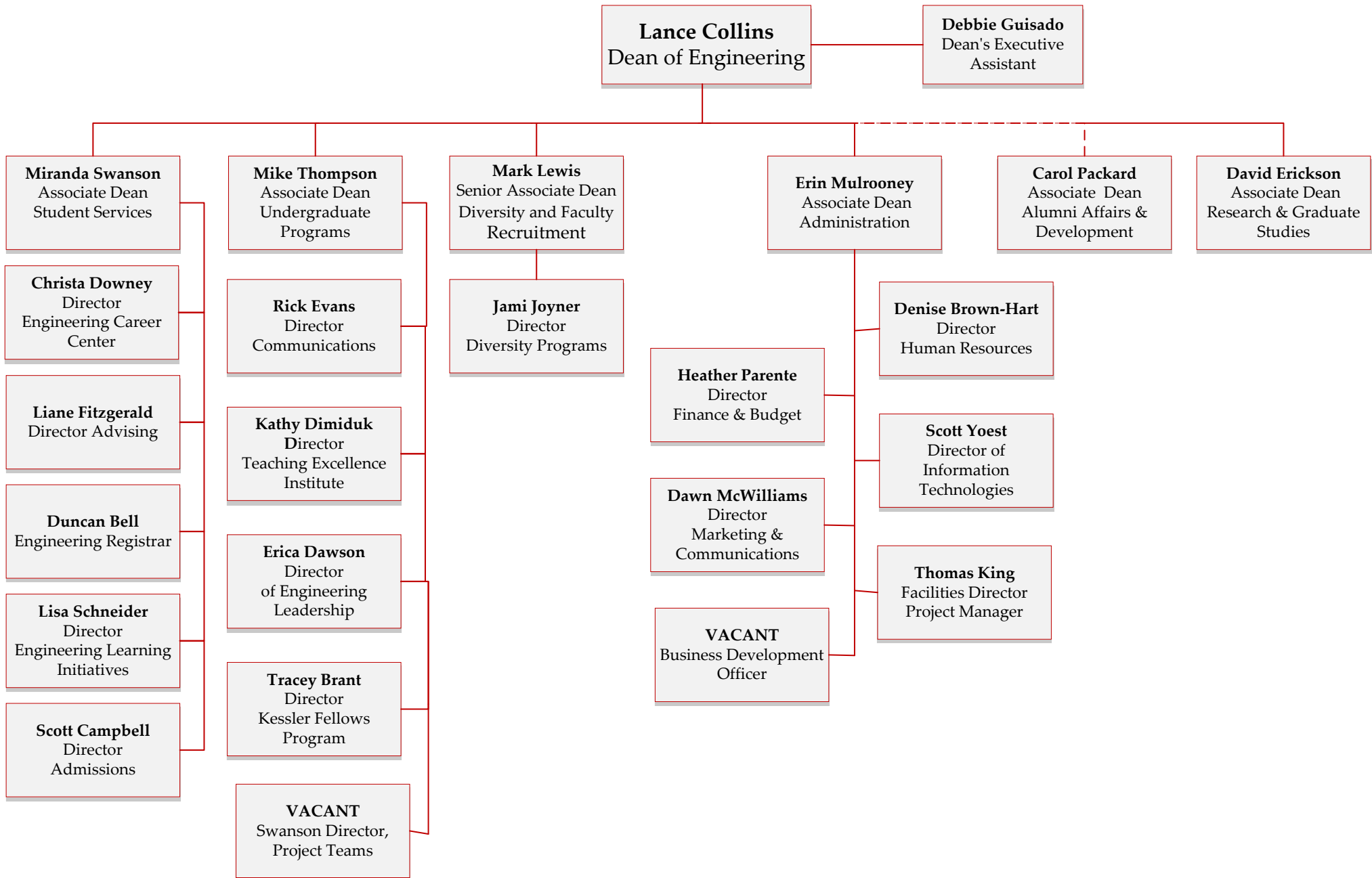
Cornell Engineering

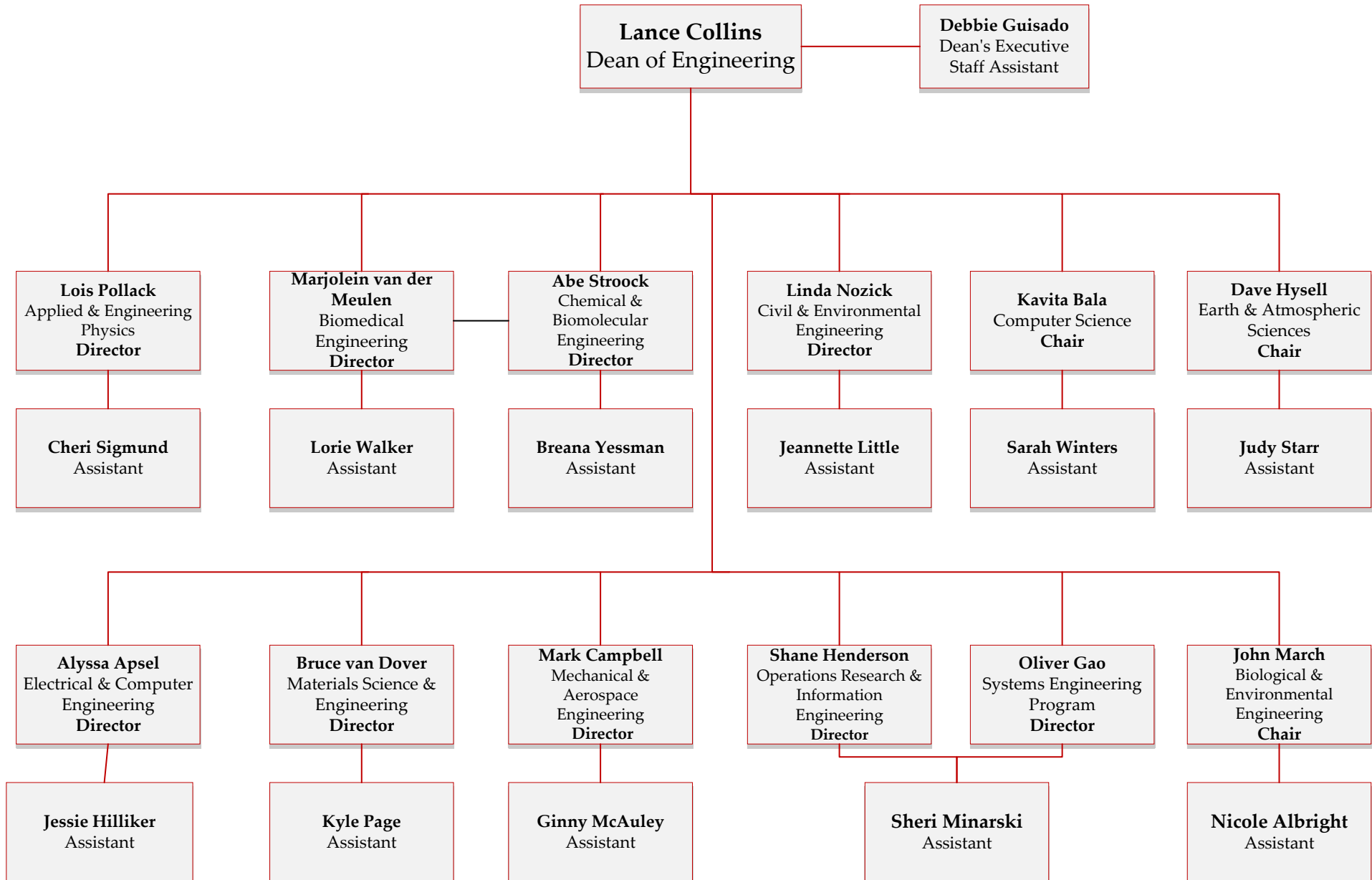


Undergraduate Programs, Student Services and Administration

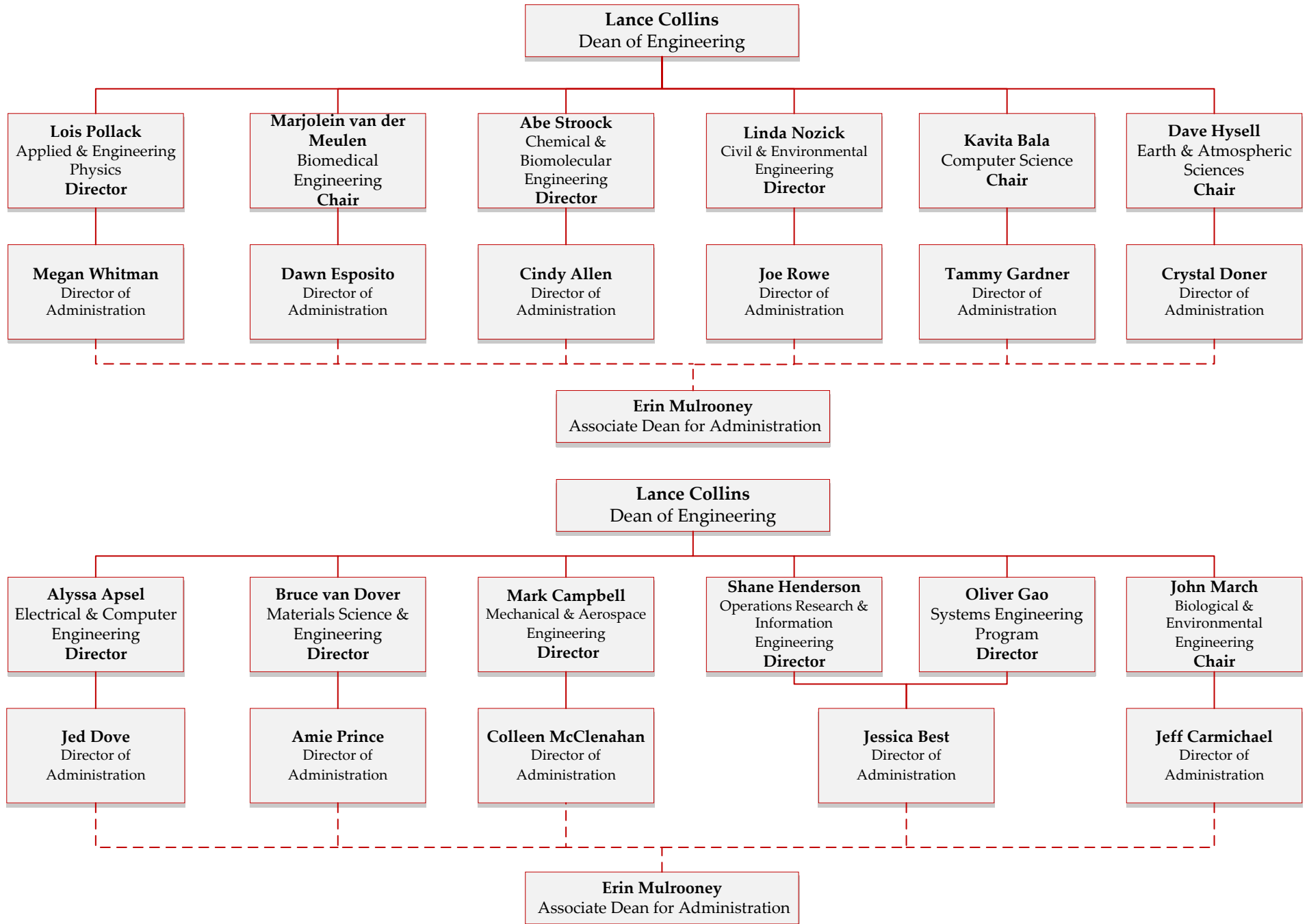
- Admissions
- Advising
- Communications & Marketing
- Engineering Career Center
- Corporate & Foundation Relations
- Information Technology
- Diversity Programs
- Engineering Learning Initiatives
- Facilities
- Finance & Budget
- Human Resources
- Registrar
- Research & Graduate Studies

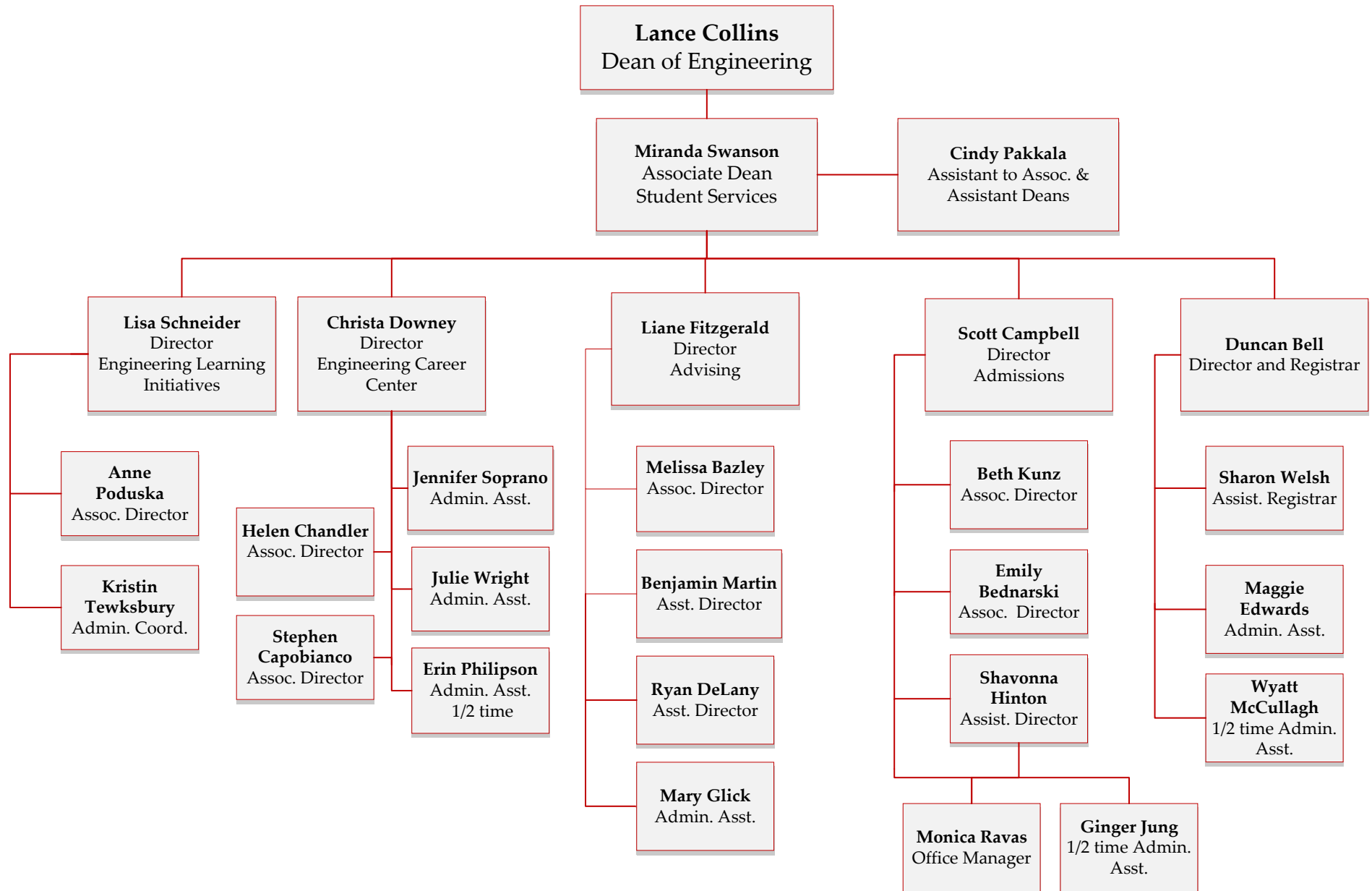
*Reports directly to Kristen Ford-Assoc VP
Colleges and Units.

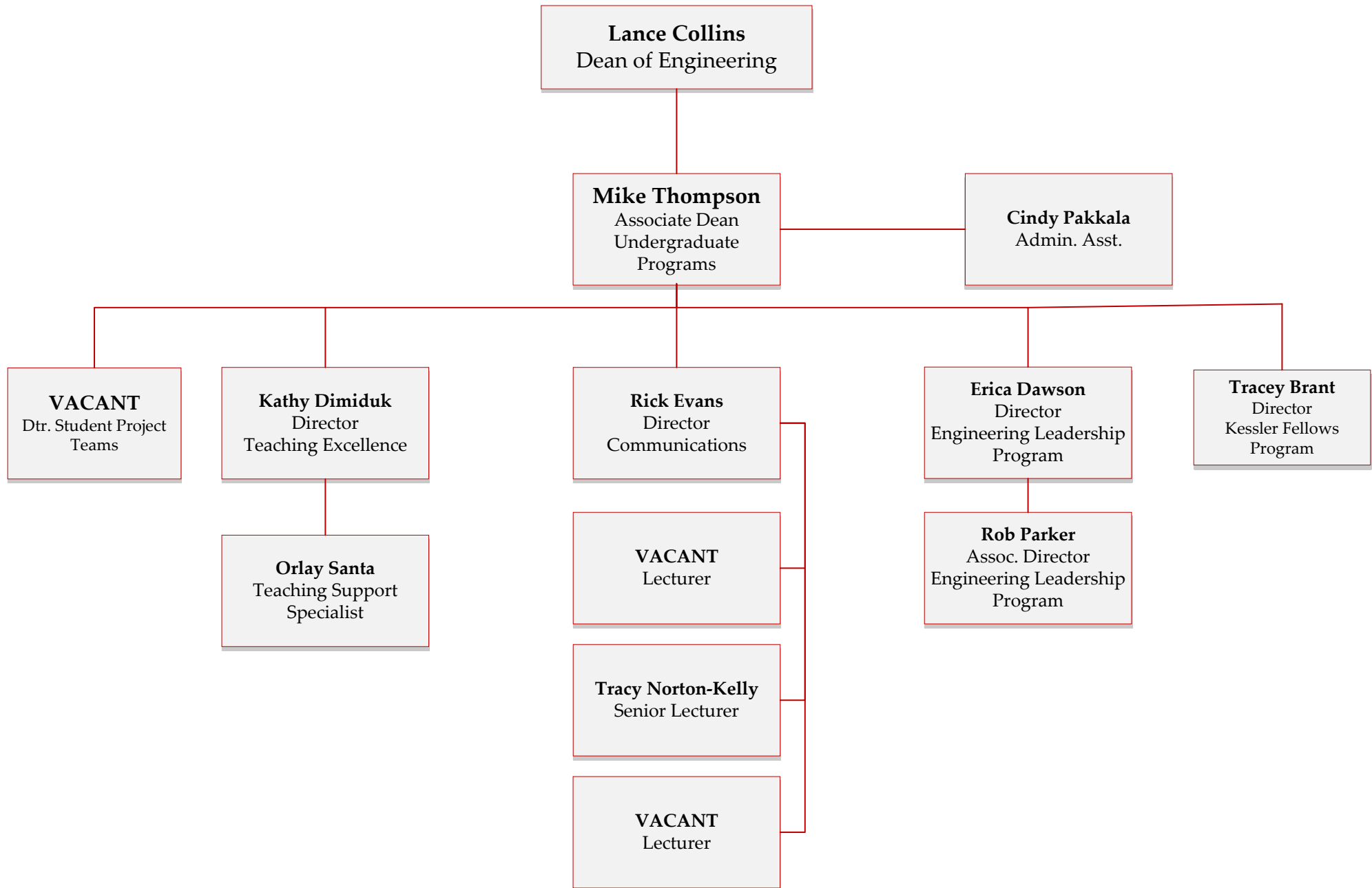


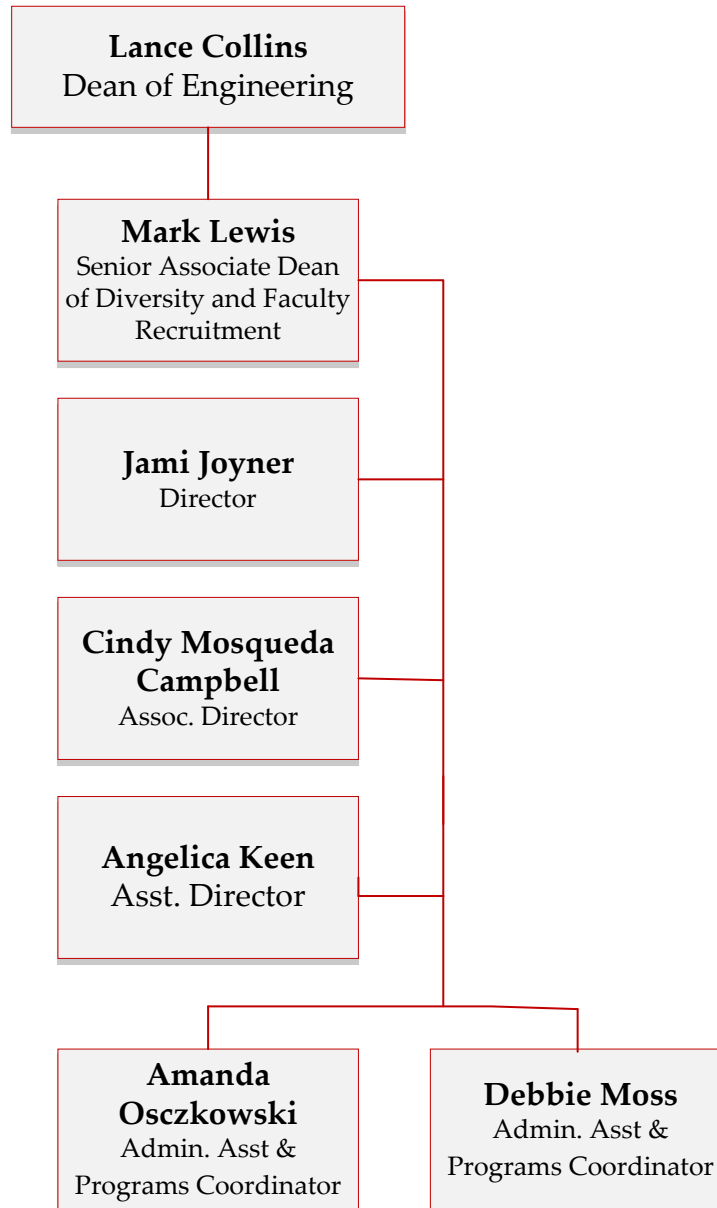


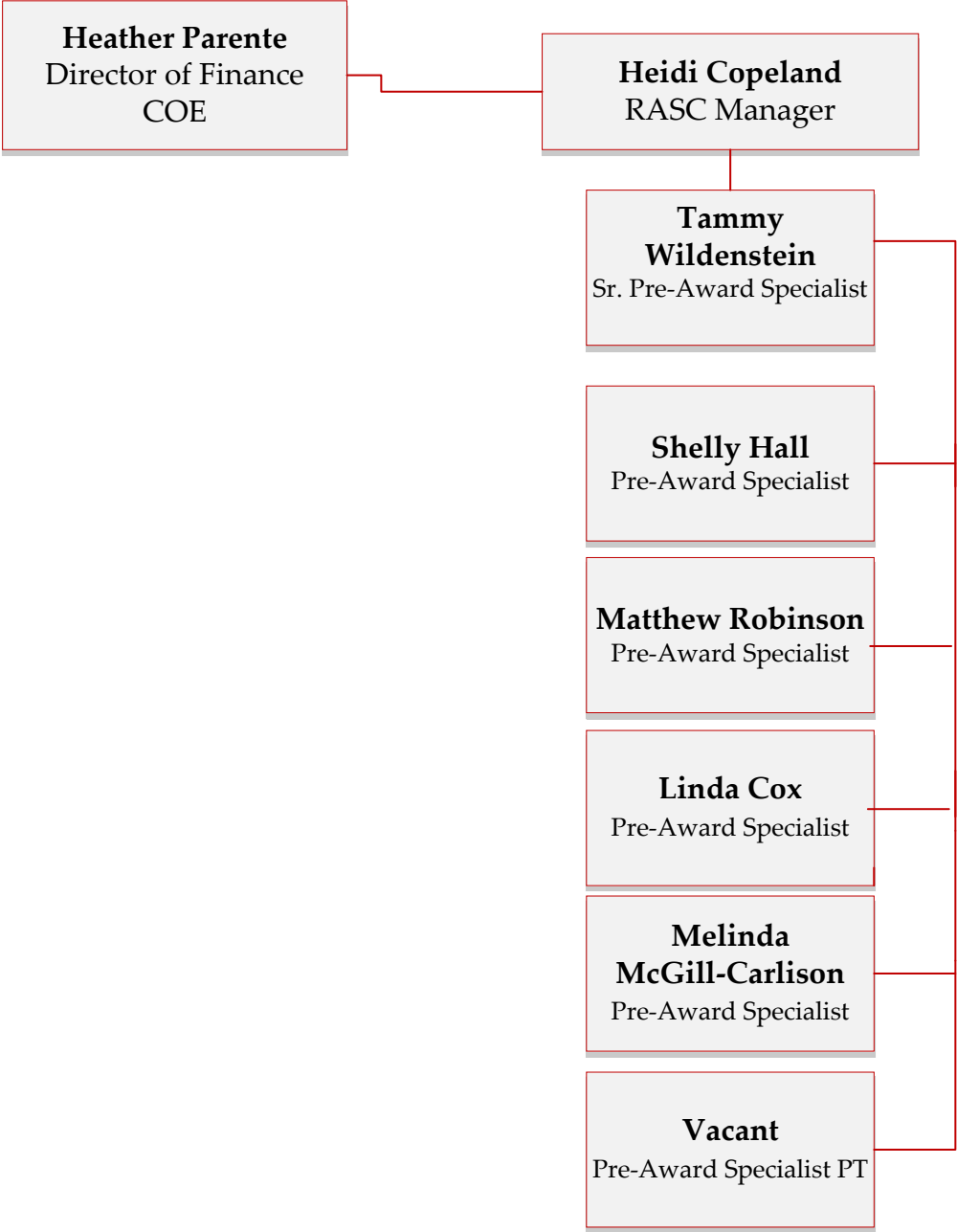
Department Administrative Directors

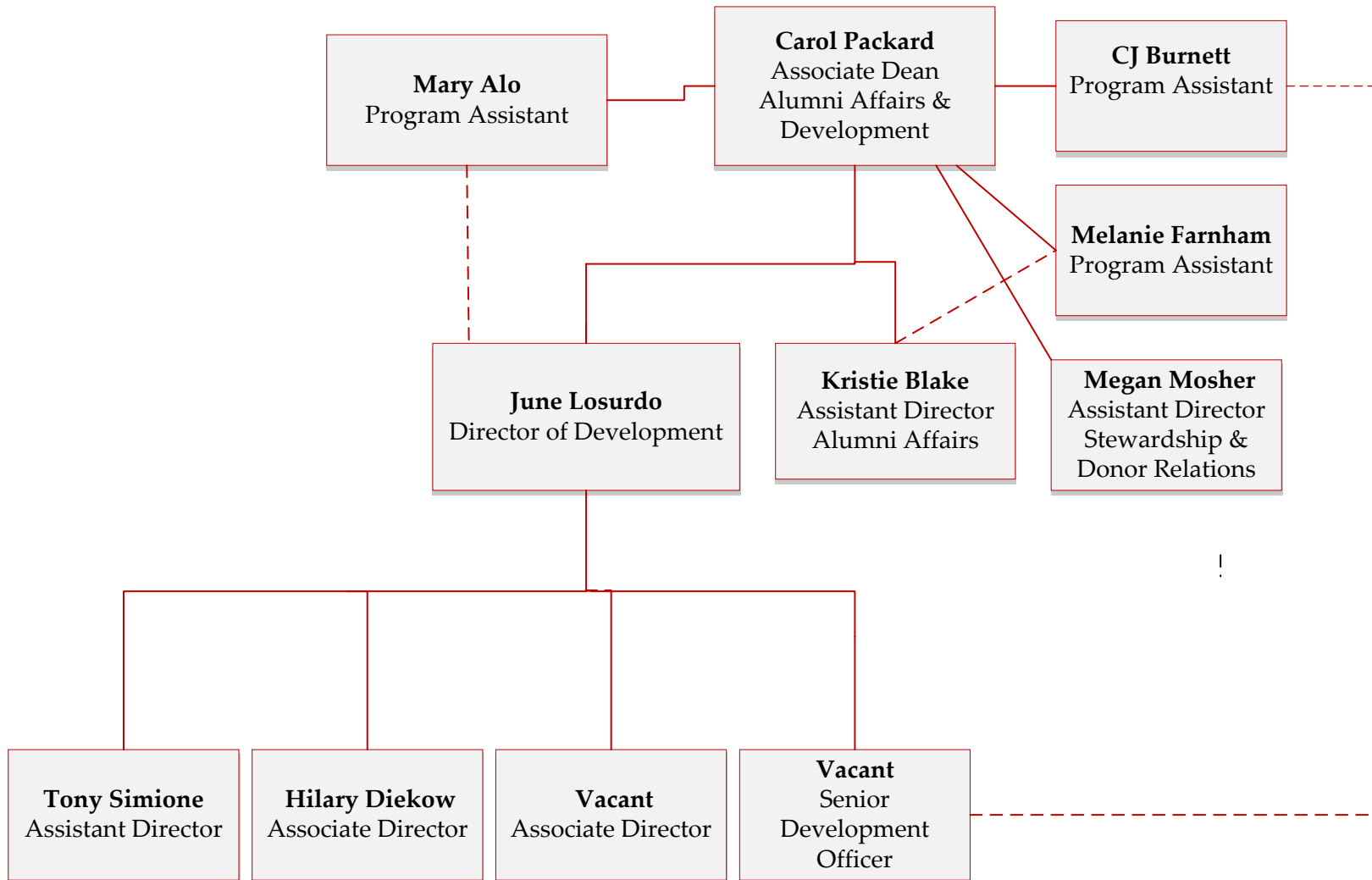




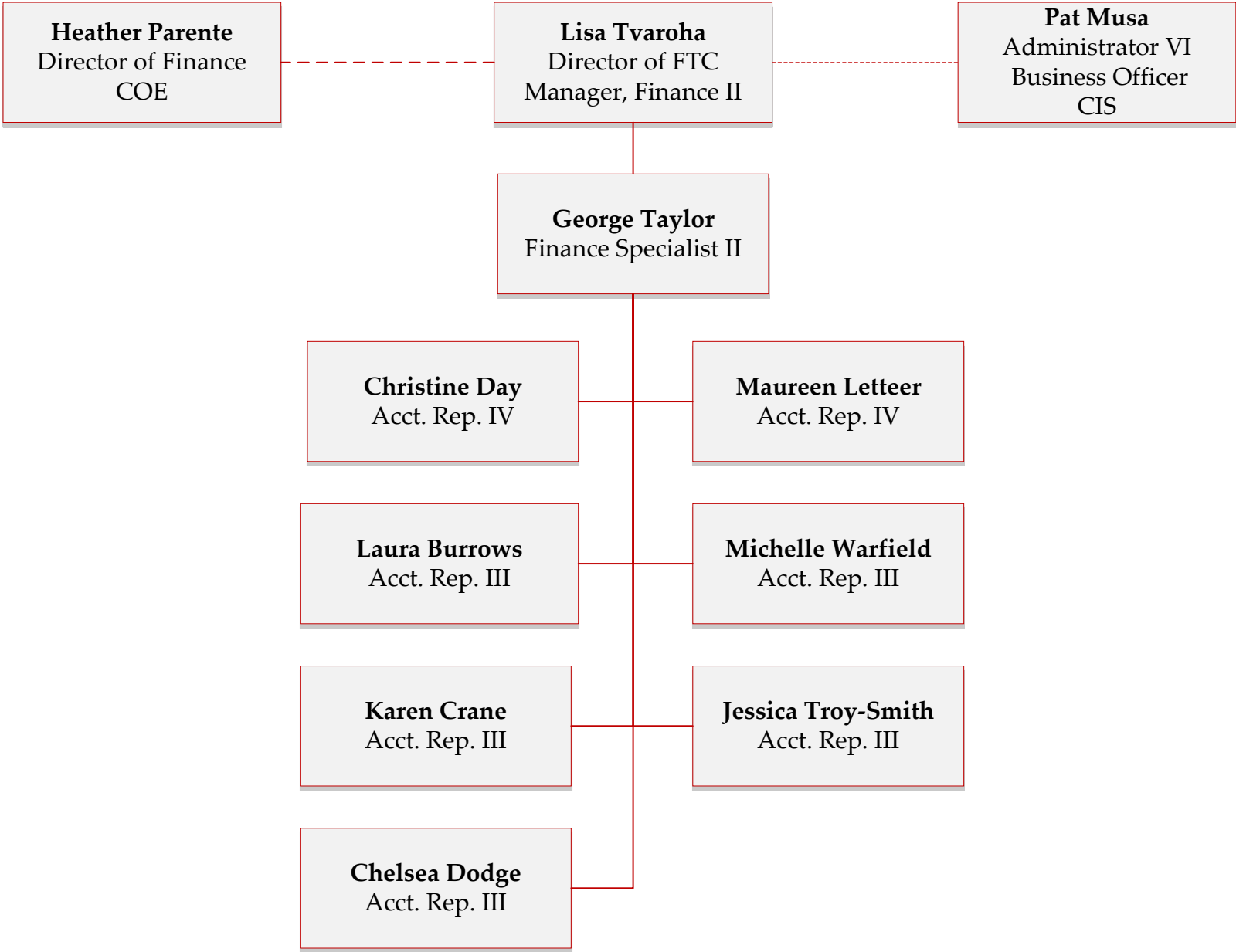




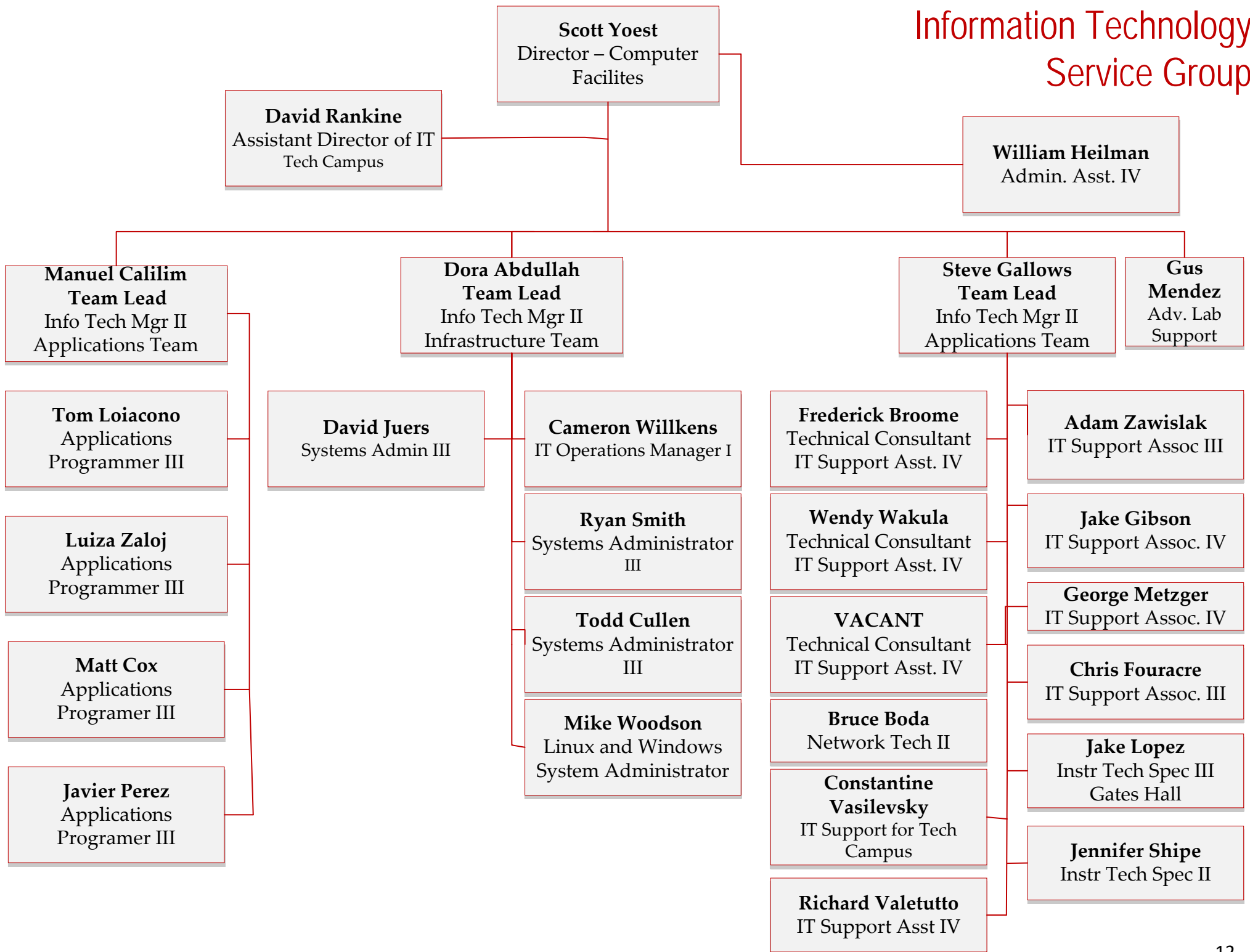




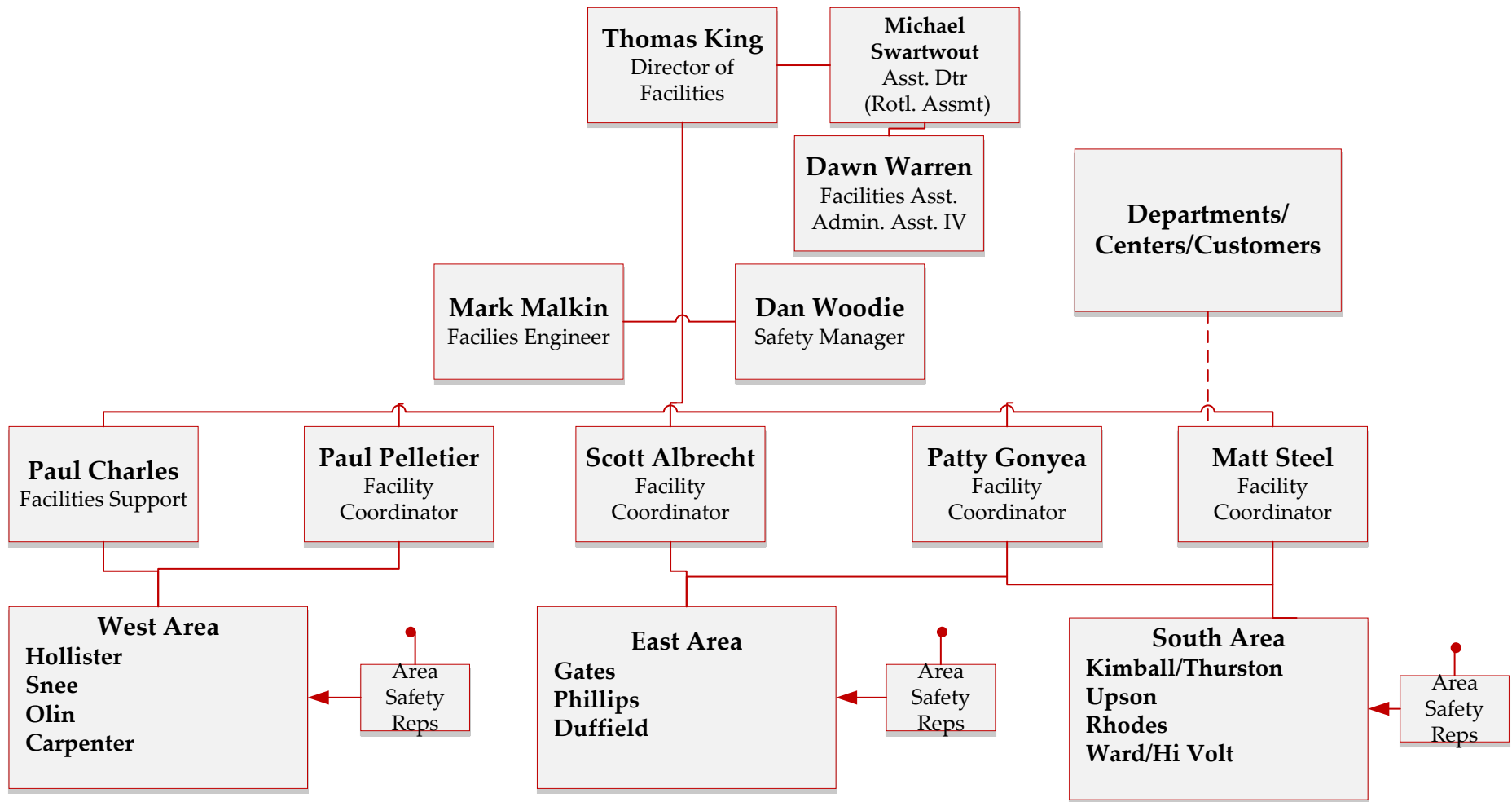
Financial Transaction Center



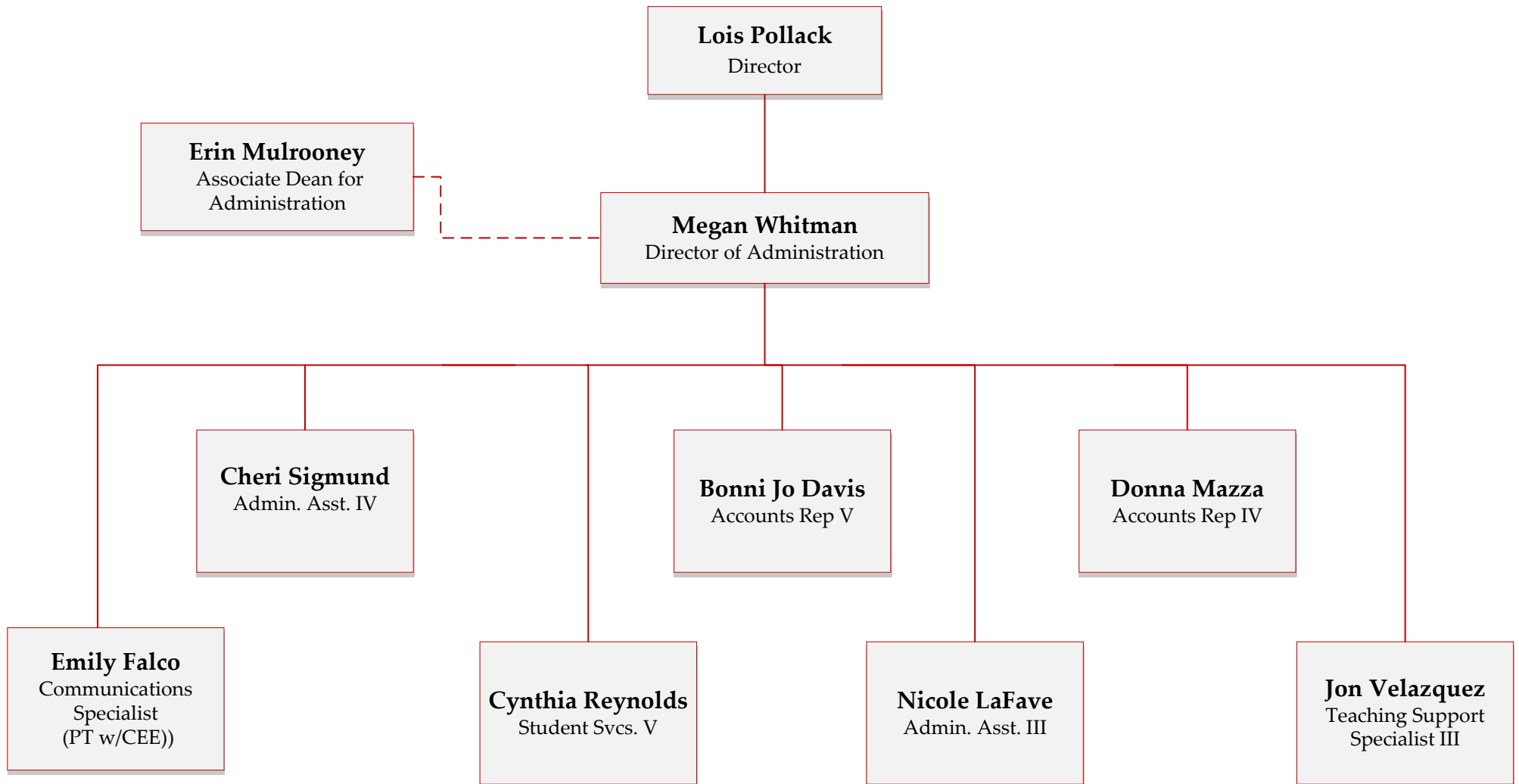
Information Technology Service Group



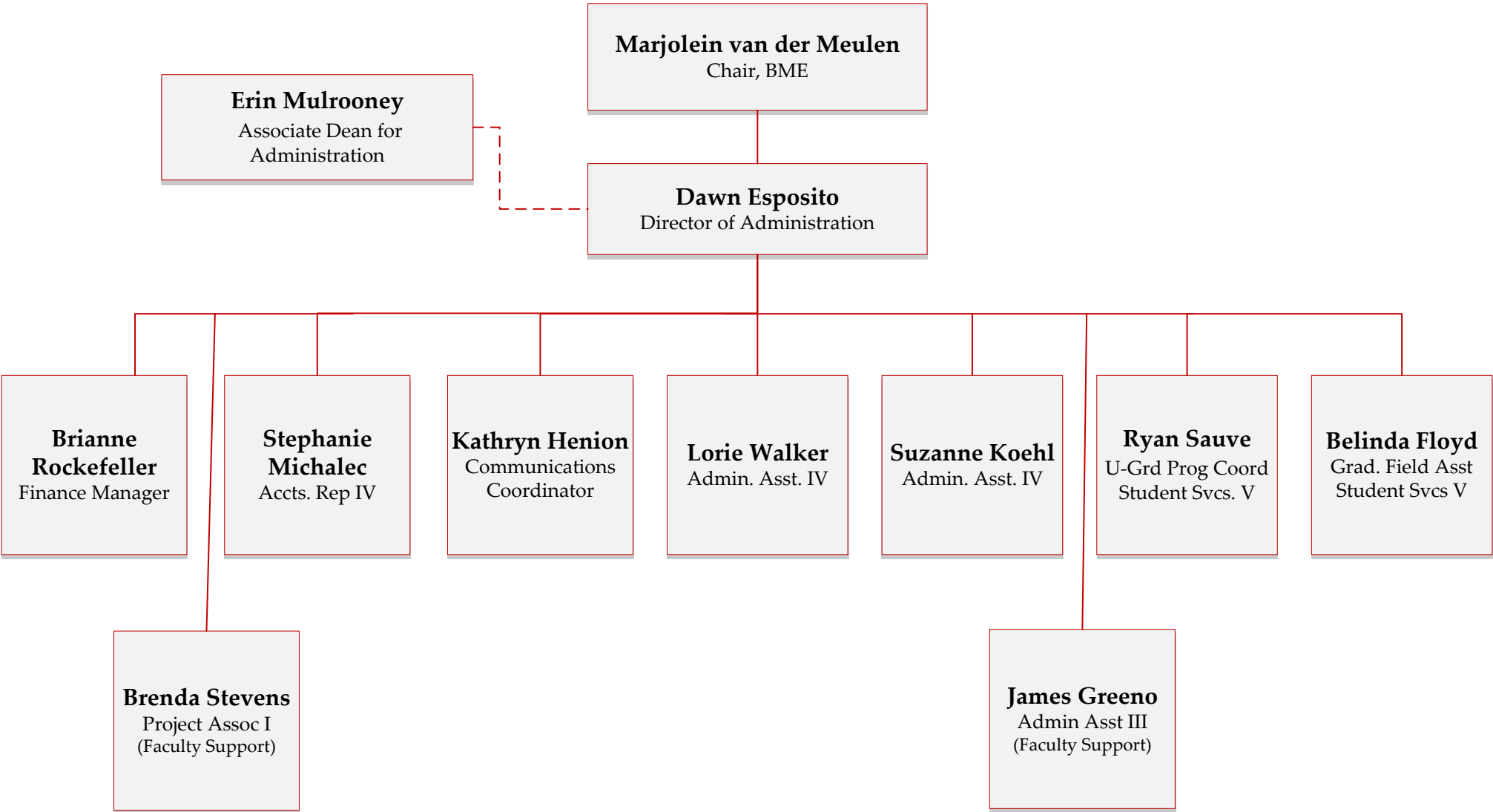
Facilities



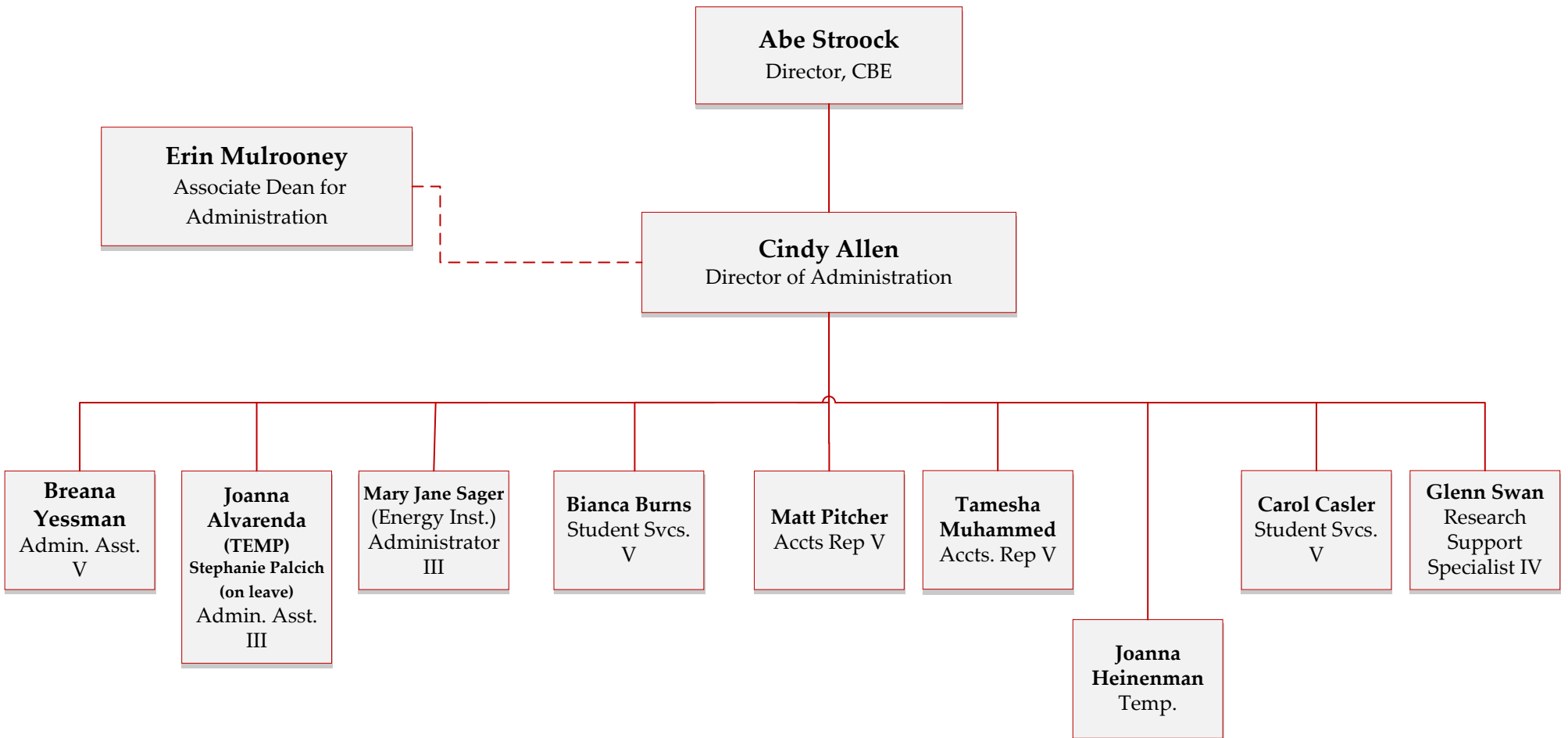
School of Applied & Engineering Physics



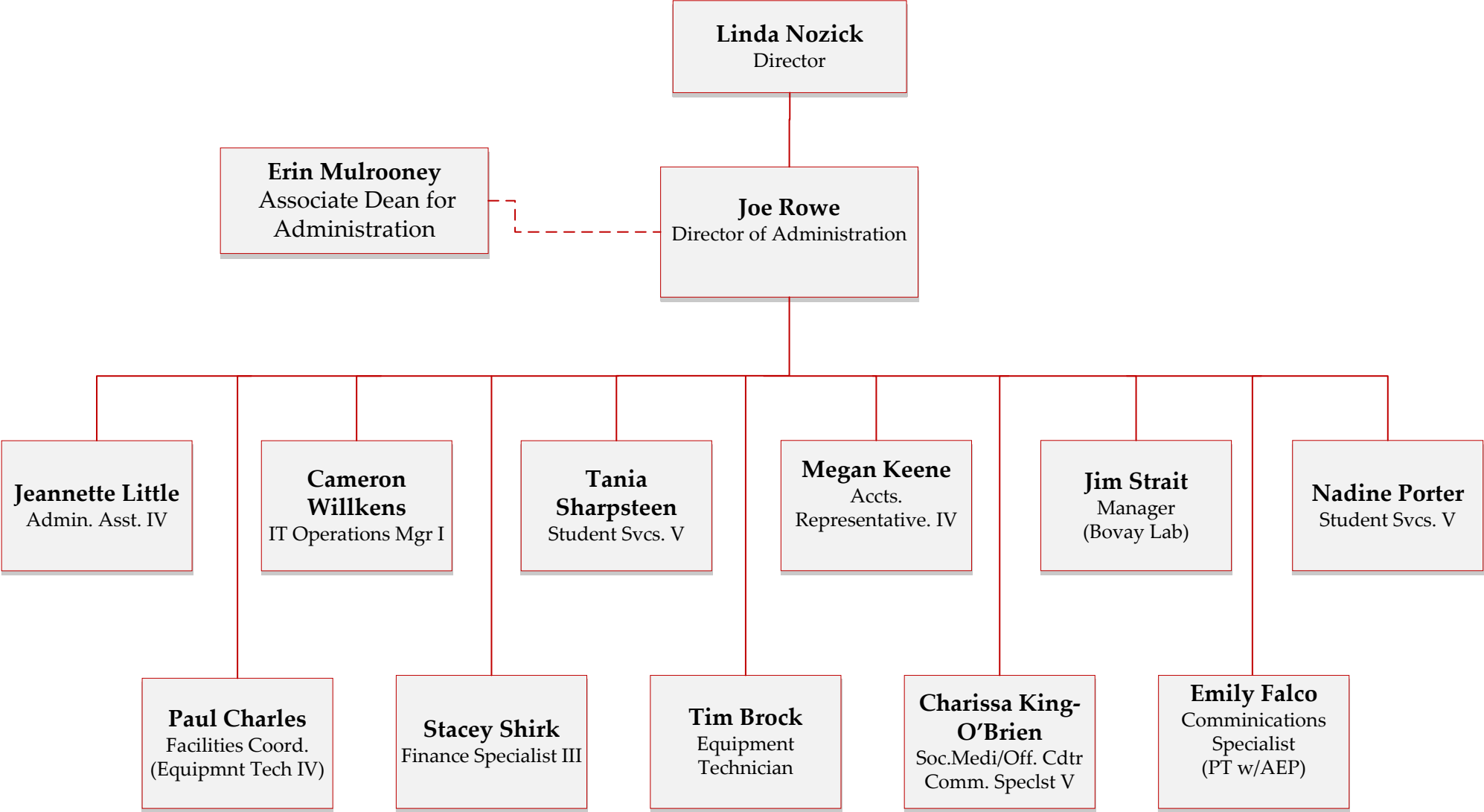
Department of Biomedical Engineering

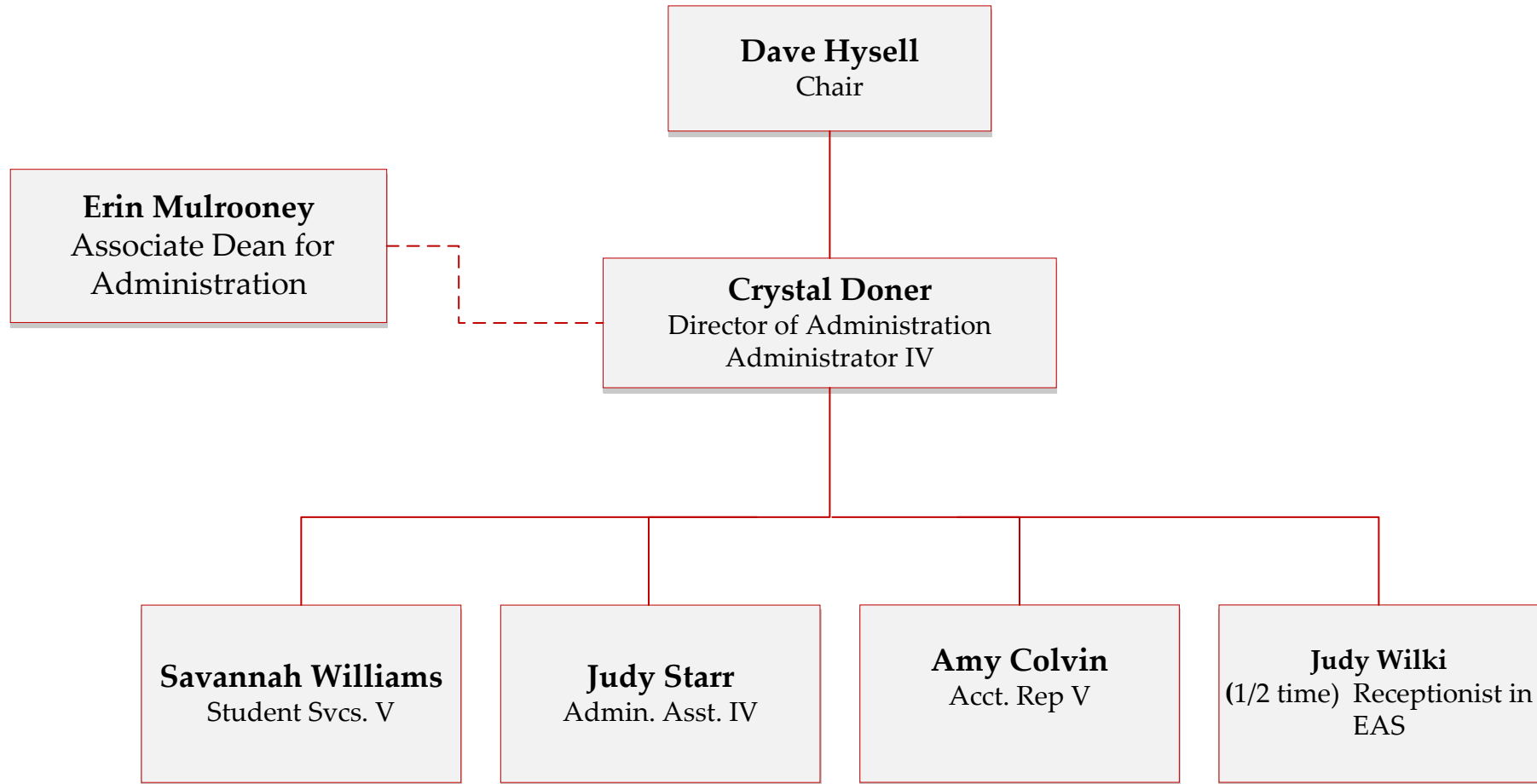


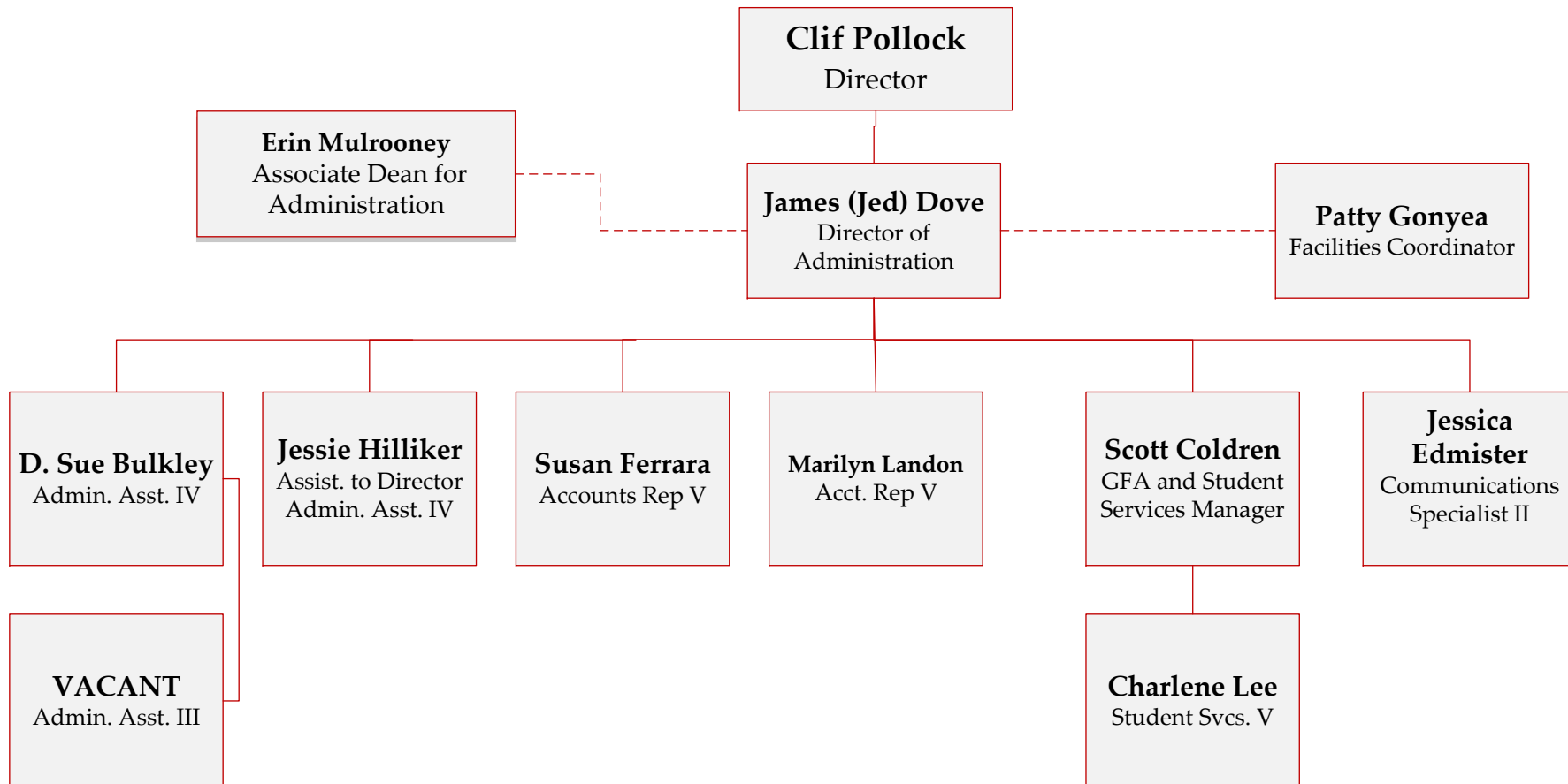
School of Chemical & Biomolecular Engineering



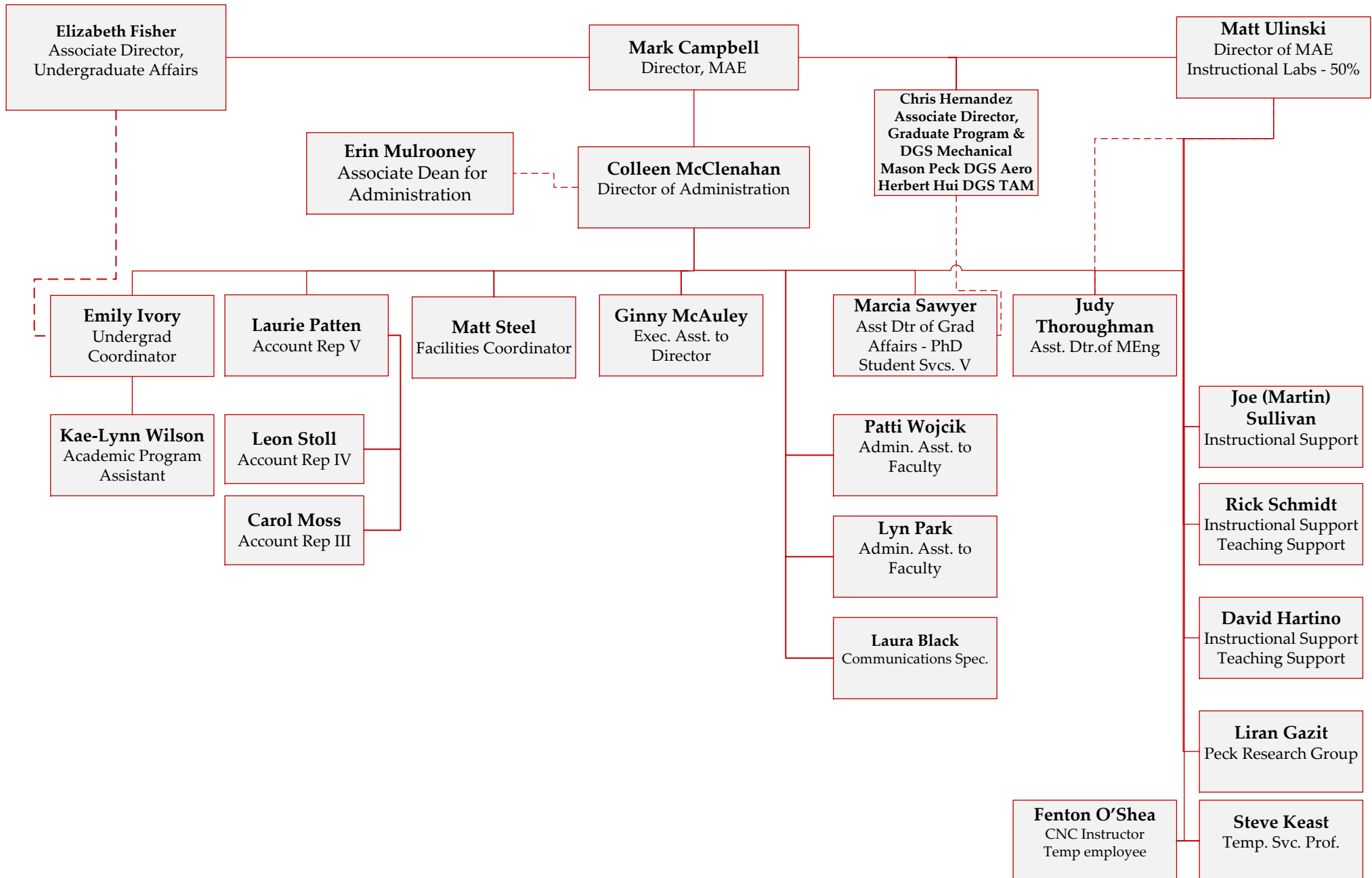
School of Civil & Environmental Engineering







Sibley School of Mechanical & Aerospace Engineering



Department of Materials Science & Engineering

